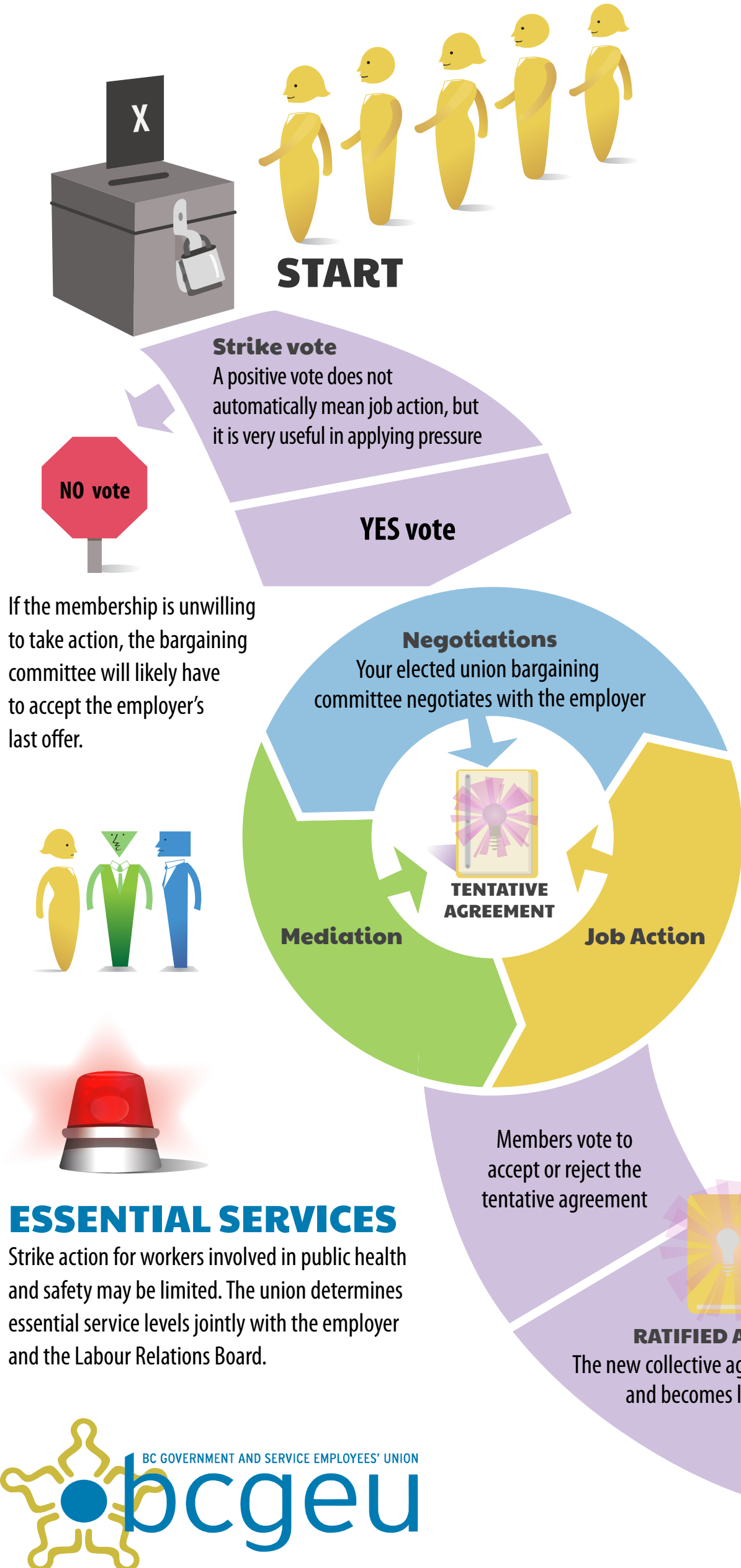


STRIKES 101

55,000 BCGEU MEMBERS WILL SEE THEIR CONTRACTS EXPIRE IN 2012.

Our goal is to build fair, forward-thinking negotiated agreements for all our members. It is essential to demonstrate our strength and solidarity when employers refuse to bargain fair and reasonable collective agreements.

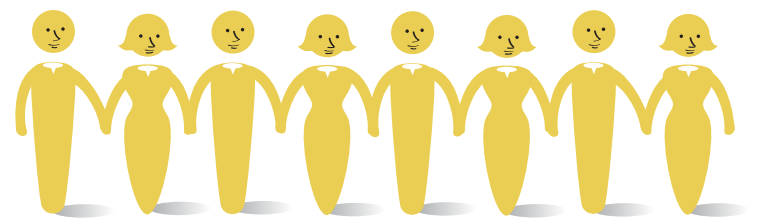


STRENGTH THROUGH SOLIDARITY & ACTION

A strong strike vote will show the employer that union members back their bargaining demands up to and including job action.

After a positive strike vote, some form of job action must occur within three months or the vote becomes stale. This can range from a targeted temporary work stoppage to a full-scale strike.

Show your solidarity, and do not cross any picket lines. Under their collective agreement, all unionized workers have the right to refuse crossing a picket line.



HOW TO CLAIM STRIKE PAY

The union provides strike pay and benefits

- You must have a signed BCGEU membership card to receive strike pay. Contact a steward to obtain a membership card.
- Your current mailing address must be on file with the union. Make sure you're up to date by logging in at BCGEU.ca.
- If you are on strike, you must sign the roster and perform the picketing duties assigned to you.

All health and welfare benefits continue to be paid during a strike. The union agrees to pay the premiums on your behalf.

